



JIUHE MACHINERY

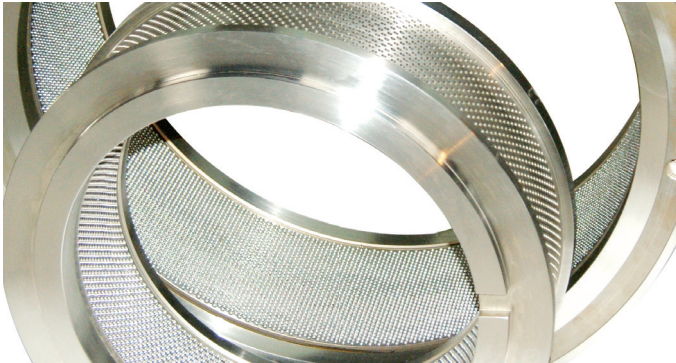
01 / About Jiuhe

After almost 20' years development , Jiuhe has grown into a leading global ring die manufacturer.

Our companys locates in Tianmu Lake Industrial Park, covering an area nearly 8000 square meters.

We specialize in manufacturing spare parts of pellet machine. Such as ring die, roller shell, etc. Our pursuit of excellence is not only about the control of every product quality, but also the execution of system standard for the whole spare parts. In the recent years, Jiuhe has made large investments in advancing CN (HTT KH-4-100 gun drill) for ring die and heat treatment equipment, to ensure the high quality of our products while maximizing the benefits to our customers.

Over the past decades, Jiuhe has accumulated rich experience in the spare parts business. Therefore, we can do more and better for you.



02 / Company Directory

01 / About Jiuhe

02 / Company Directory

03 / Value Created by Knowledge

04 / Advantages of Jiuhe Ring Die

05 / Honor

06 / Correct Operation Of Dies

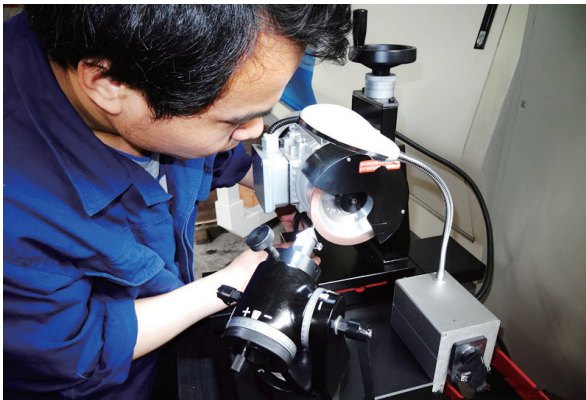
07 / Product Information

08 / Maintenance & Abnormalities

09 / Agency Abroad

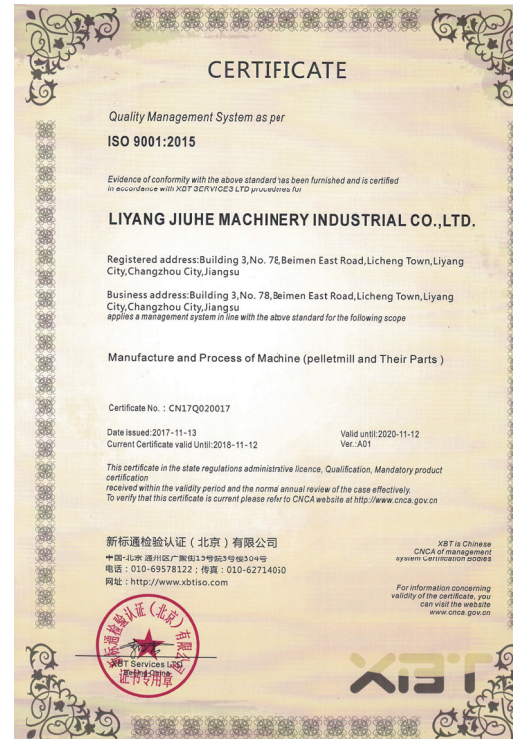


03 / Value Created by Knowledge



04 / Advantages of Jiuhe Ring Dies

- 1** Die Materials
Alloy dies have good abrasion and breakage resistance, making them the choice for feed processors. Chrome dies have superior corrosion resistance, making them the choice for processing operations involving corrosive chemicals.
stainless steel dies have the best abrasion and breakage resistance as well as good corrosion resistance.
- 2** The use of imported gun drilling and multi-station group drilling equipment, allows holes to be drilled at one time. Plus, high-quality finishing equipment gives you dies of high capacity producing feed with a quality appearance.
- 3** Automatic drilling machinery provides good design and accurate hole pattern; Adopting of high-quality exported feedstock to ensure fine quality of products.
- 4** According to customer's requirements, design various suitable hole diameters.



JIUHE MACHINERY

05 / Honor

A

Advanced gun drilling equipment, to ensure a smooth surface of all ring die hoies.



B

Inside and outside circles of each die are subject to a fine grinding treatment producing a smooth, clean cut for feeds.



C

The use of high quality exported feedstock to guarantee the high quality of our raw materials.



Excellent Process Advanced Equipment

Advanced Technology From Europe, Bring Exquisite Craft Of World-class

Liyang JIUHE Machinery Manufacturing Co., Ltd. is in the lead of ring die industry in China. JIUHE can reach the world advanced level rely on the advanced technology and equipments from Europe. We keep pursuing "High quality, High efficiency, Low consumption", trying best to provide excellent products and service for customers and make contribution to feed industry.



▶ Advanced gundrill machine provides fine surface inside die holes

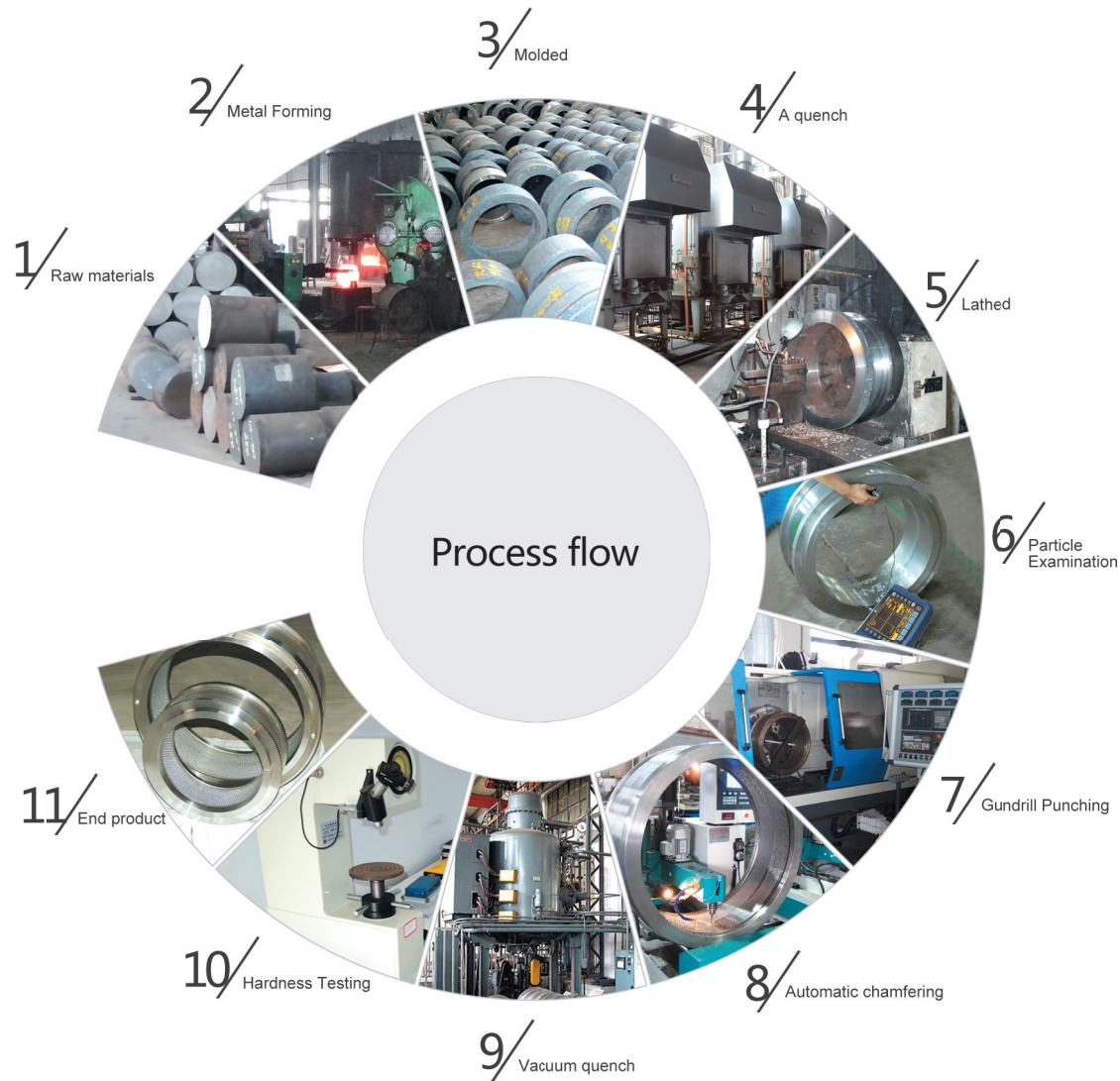
Automatic drilling machinery provides good hole design and accurate hole pattern ▶



LIYANG JIUHE MACHINERY INDUSTRIAL CO.,LTD



JIUHE MACHINERY



Correct Operation Of Dies

Maintenance for Pellet Mill

As the pellet mill is the main equipment in feed mill, firstly feed mill should process daily, week and month maintenance to ensure the stable working condition of pellet mill, if there's some problem in the equipment, especially the drive wheel and main shaft, the spare parts should be changed on time to ensure the normal using for ring die.

Installing the magnet mechanism in the inlet of feed, stopping the metal material dropping in the pellet cavity and the broken of ring die.

Checking the situation of drive parts, clamp and drive wheel while installing ring die, if there's some problem, the related spare parts should be changed on time to ensure the normal operating of pellet mill.

Operation and Maintenance of Ring die

Due to the different kinds of feed, which is related to the material, ration of holes, holes length and pressure reducing holes and design of ring dies, the ring die should be designed by professional corporation to ensure the maximum value of ring die.

The gap of ring die and roller should be controlled between 0.1-0.3mm, do not make eccentricity roller touched with the surface of ring die. This size is not easily found by eyes.

The feed flow must be from low speed to high speed while the pellet mill operating. Do not operating with high speed while starting in case of resulting in the broken of ring die and pellet mill.

Summarize for pelleting of different material

With the application of pellet feed in the area of livestock and poultry, aqua products, compound fertilizer, lupulus, chrysanthemum, wood and other industries, which making the using of pellet mill become more popular. Since the different feed formula and the difference of area, the requirements of pellet feed for customer is also different. The parameter of ring die for every feed mill is different as the different requirements and feed formula.

The main parameter of ring die include material, diameter of holes, ratio of compress and ration of holes. And the main parameter of ring die must be decided according to the chemistry and physics of material for feed formula. Chemistry mainly include protein, starch, fat, cellulose, etc. And the physics mainly include size, moisture, volume.

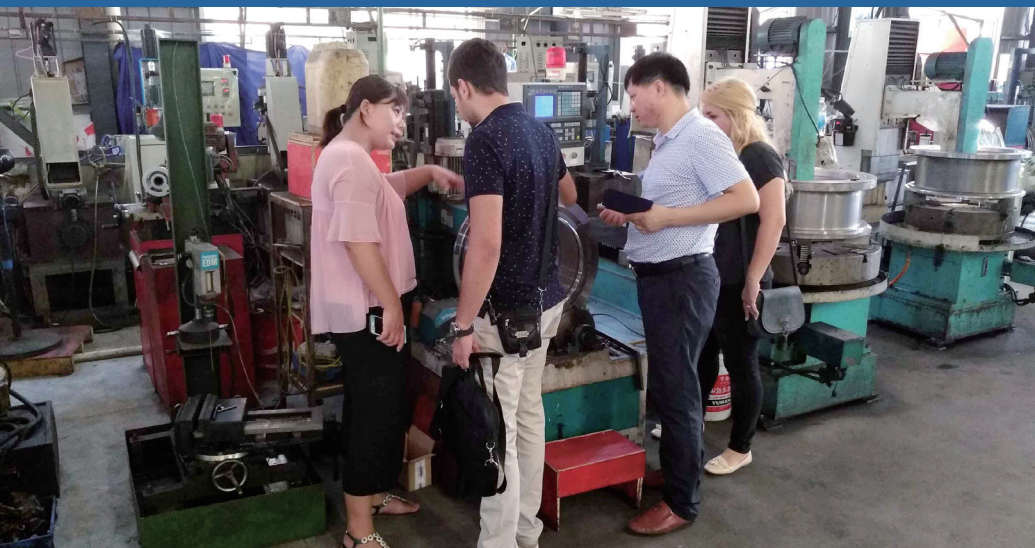
Poultry feed containing mainly wheat and maize, a higher starch content and less fiber content carries a high starch feed, feed must ensure that this type of suppress adequate gelatinized starch, reach high temperatures and stable processing conditions, so in the granulation process Join steam quenched and crucial, and quenched three elements : the moisture, temperature, and time are indispensable. To achieve stable quenching, it is necessary to ensure the supply steam, device status, correct operation, standardized management is an important precondition.



06 / Correct Operation Of Dies

A

Strict self-testing.



B

Technical experts on-site guidance.



C

The equipment debugging.



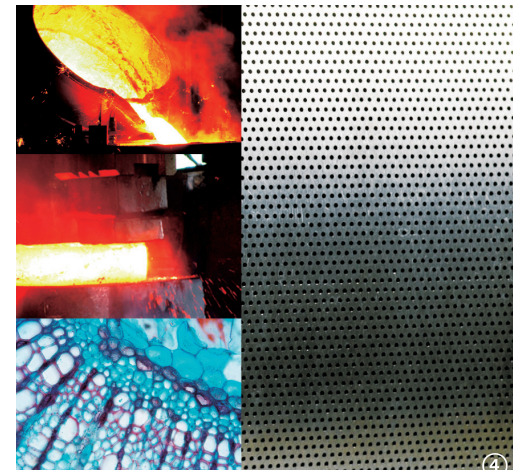
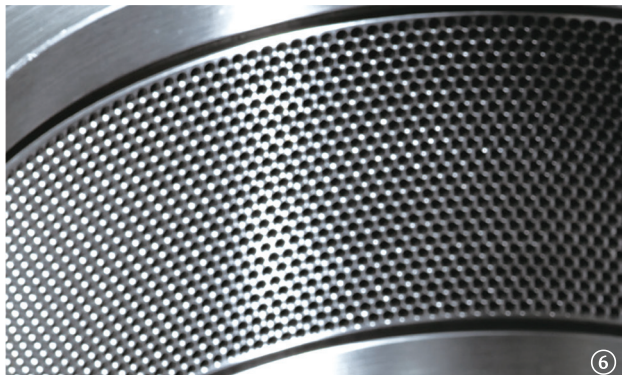
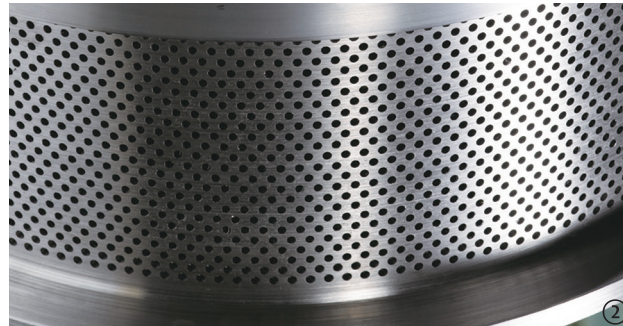
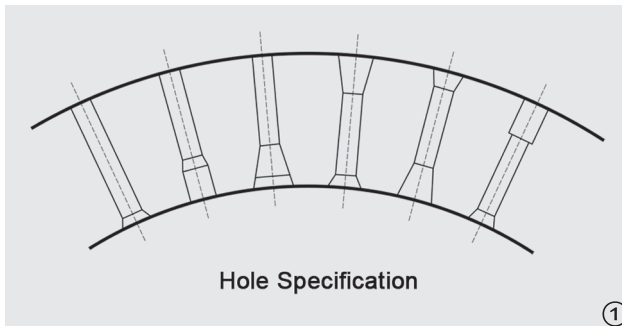
Heat Treatment Center

Ensure high quality Product, invested heavily introduce advanced vacuum hardening furnace, box furnace, etc., with industry leading levels of heat treatment production equipment, making products more solid





JIUHE MACHINERY



1. According to customer requirements and material characteristics, design Varous Suitable hog diameters
2. Uniform Hole Design and Pattern
3. Excellent Drilling Process
4. Good Inside Structure
5. Smooth Hole Surface
6. Uniform Hole Taper



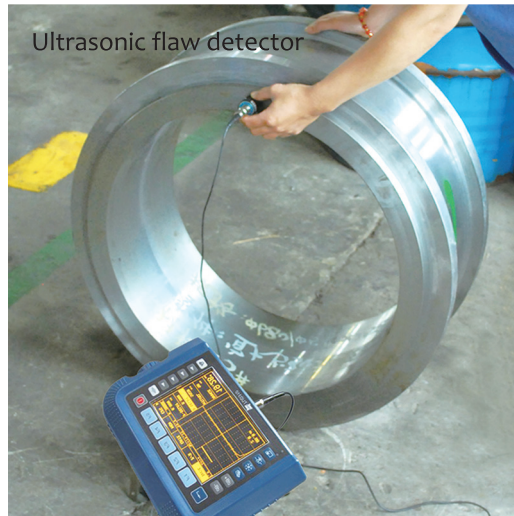
Research and Development Testing



Sclerometer



Spark microscope



Ultrasonic flaw detector



Metallurgical microscope



Sclerometer





JIUHE MACHINERY

Advantages of JIUHE Ring Die

Select quality forging stock, but general companies select casting stock

Use gun drill , the hole is completed by one time, nice appearance, high capacity

Use America vacuum oven and advanced treatment craft, ensure twice service life

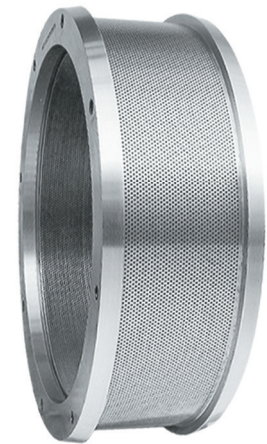
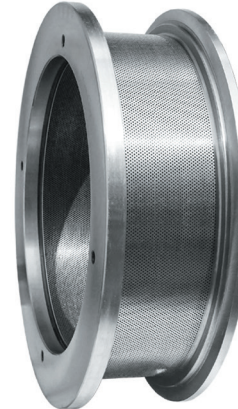
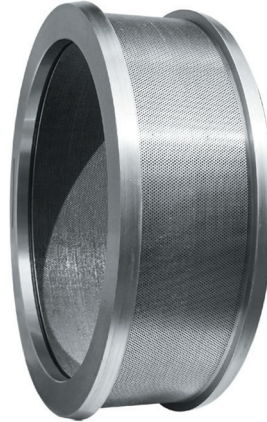
Strong R&D help customer design compression ratio and strength according to requirements, Ensure pelleting effect and high quality of product





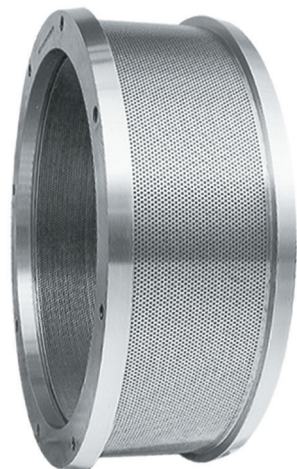
Product Show

JIUHE can manufacture different kinds of ring dies according to clients' requirements
Such as: Buhler pellet mill, CPM pellet mill, Andritz Pellet Mill, ZCME pellet mill, Van arson pellet mill, Shende pellet mill, Muyang pellet mill

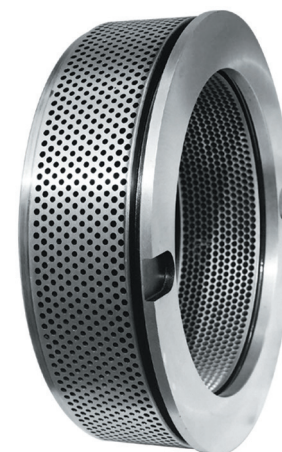




JIUHE MACHINERY



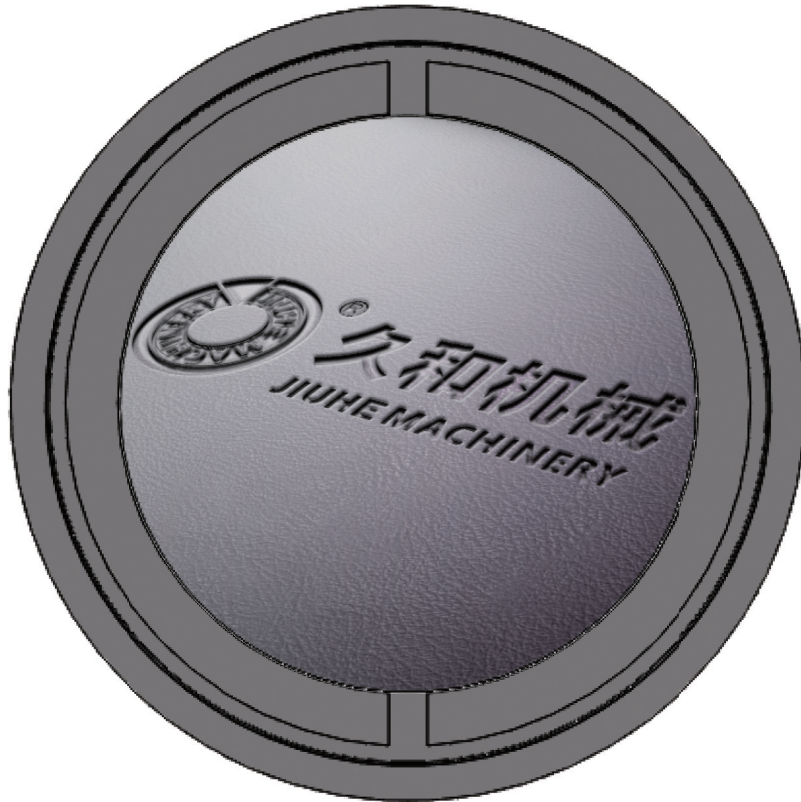
Advanced equipments, Exquisite craft
JIUHE excellent dies
increasing capacity and creating benefit for customers



LIYANG JIUHE MACHINERY INDUSTRIAL CO.,LTD



07 / Product Information



A / SZLH series

F / E&H series

B / MUZL series

G / TPM series

C / Buhler series

H / PTN series

D / CPM series

I / Munch series

E / IDAH series

J / Hiyemmak series

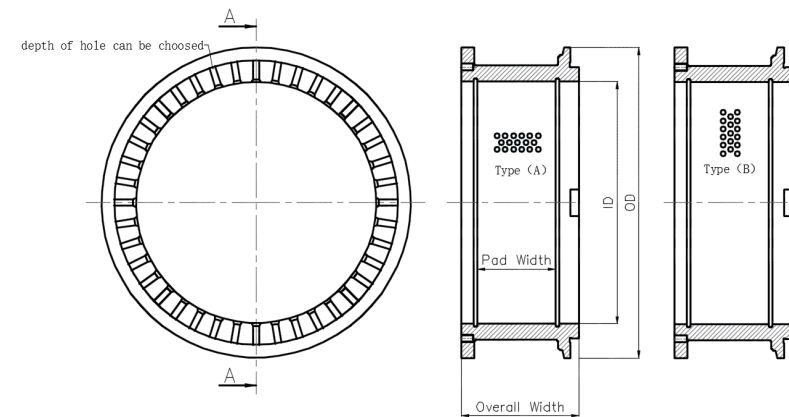
We can make many famous models ring die & roller shells, such as: SZLH, CPM, Buhler, PTN, Andritz Sprout, Matador, Amandus Kahl, Muyang, Paladin, Sogem, Van Arssen, Yemmak, Promill, etc. We make all kinds of pellet mill ring dies according to customers' drawing.

- For Zhengchang pellet mill: SZLH250, SZLH300, SZLH320, SZLH350, SZLH400, SZLH420, SZLH508, SZLH678, SZLH768, etc
- For Muyang pellet mill: MUZL180, MUZL350, MUZL420, MUZL600, MUZL1200, MUZL610, MUZL1210, MUZL1610, MUZL2010; MUZL350X, MUZL420X, MUZL600X, MUZL1200X (Especially for shrimp feed pellet, diameter: 1.2-2.5mm)
- For Awalia pellet mill: Awalia 420, Awalia 350, etc
- For Buhler pellet mill: Buhler 304, Buhler 420, Buhler 520, Buhler 660, Buhler 900, etc.
- For Kahl pellet mill (Flat die): 38-780, 37-850, 45-1250, etc.



JIUHE MACHINERY

A / SZLH Product Show



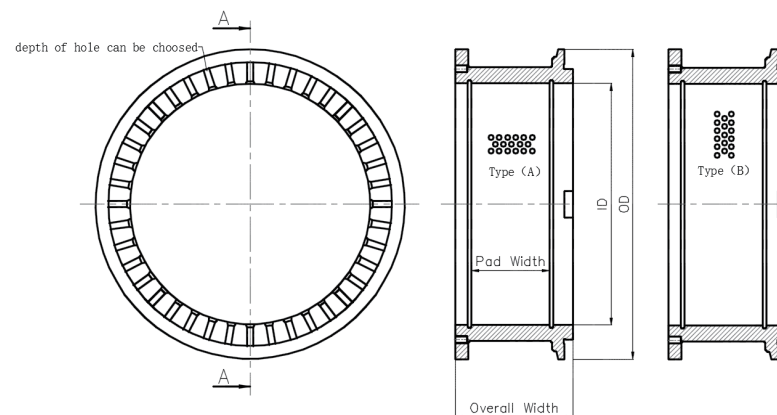
S/N	Model	Size	Hole Size mm
		(OD×ID×overall width×pad width-mm)	
1	SZLH320	432*320*130*87	Φ1-Φ20
2	SZLH350	500*350*180*100	
3	SZLH40	558*400*200*120	
4	SZLH40D	558*400*218*138	
5	SZLH420	580*420*196*196	
6	SZLH420D	580*420*214*138	
7	SZLH508	660*508*238*155	
8	SZLH508E	660*508*284*185	
9	SZLH558	774*572*270*170	
10	SZLH578	774*572*300*200	

Note: If user's data go beyond the above-mentioned scopes, they may be subject to an agreement between manufacturer and client.

LIYANG JIUHE MACHINERY INDUSTRIAL CO.,LTD



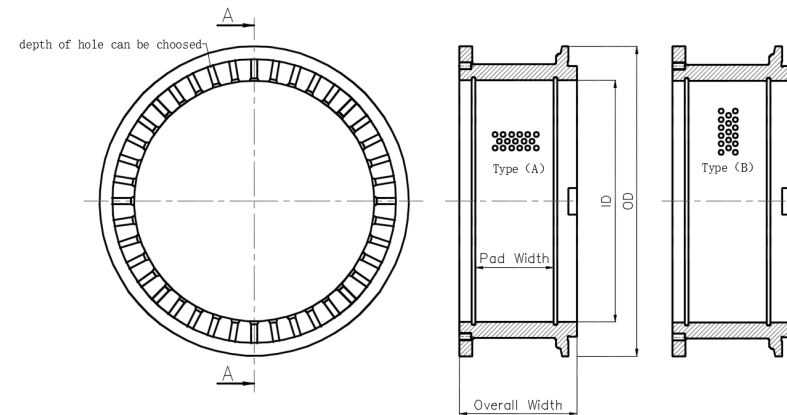
B / MUZL Product Show



S/N	Model	Size (OD×ID×overall width×pad width-mm)	Hole Size mm
11	MUZL350	422*350*142*100	Φ1-Φ20
12	MUZL420	496*420*180*140	
13	MUZL420T	560*460*185*140	
14	MUZL420TB	604.5*460*215*140	
15	MUZL420TW	560*460*209*160	
16	MUZL550	722*550*300*200	
17	MUZL600	670*550*235*170	
18	MUZL600T	670*552*255*190	
19	MUZL610TW	670*550*285*220	
20	MUZL1200	791*650*245*175	
21	MUZL1210C	751*630*257*197	
22	MUZL1610C	960*802*315*223	

Note: If user's data go beyond the above-mentioned scopes, they may be subject to an agreement between manufacturer and client.

C / Buhler Product Show

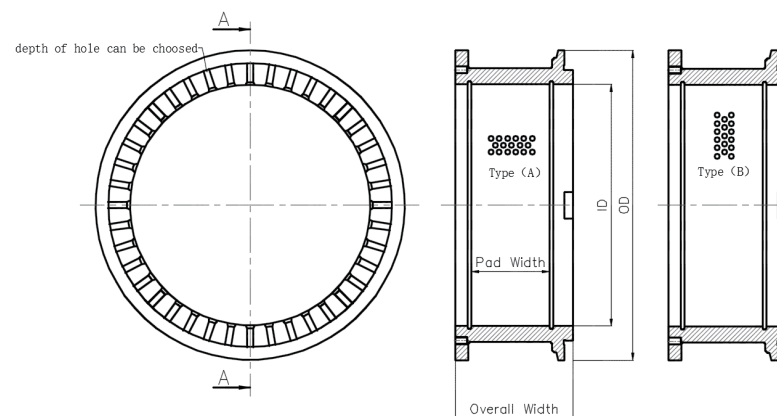


S/N	Model	Size (OD×ID×overall width×pad width-mm)	Hole Size mm
23	Buhler350	500*350*180*100	Φ1-Φ20
24	Buhler400	558*400*200*120	
25	Buhler420*108	489*420*152*108	
26	Buhler420*138	489*420*182*138	
27	Buhler420*140	580*420*217*140	
28	Buhler520*138	610*520*182*138	
29	Buhler520*178	617*520*212*178	
30	Buhler660*178	799*660*236*178	
31	Buhler660*228	790*660*286*228	
32	Buhler660*265	790*660*324*265	

Note: If user's data go beyond the above-mentioned scope, they may be subject to an agreement between manufacturer and purchaser.



D / CPM Product Show



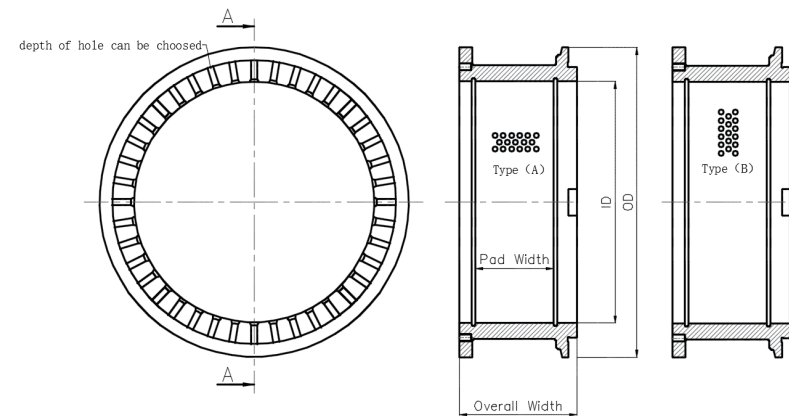
S/N	Model	Size (OD×ID×overall width×pad width-mm)	Hole Size mm
33	CPM3016-4	559*406*190*116	Φ1-Φ20
34	CPM3016-5	559*406*212*138	
35	CPM3016-7	559*406*190*116	
36	CPM3020-6	660*508*238*155.5	
37	CPM3020-7	660*508*264*181	
38	CPM3022-6	775*572*270*155	
39	CPM3022-8	775*572*324.5*208	
40	CPM7726-6	890*673*325*180	
41	CPM7726-8	890*673*388*238	
42	CPM7939-9	1022.5*826.5*398*240	

Note: If user's data go beyond the above-mentioned scopes, they may be subject to an agreement between manufacturer and client.



JIUHE MACHINERY

E / IDAH Product Show



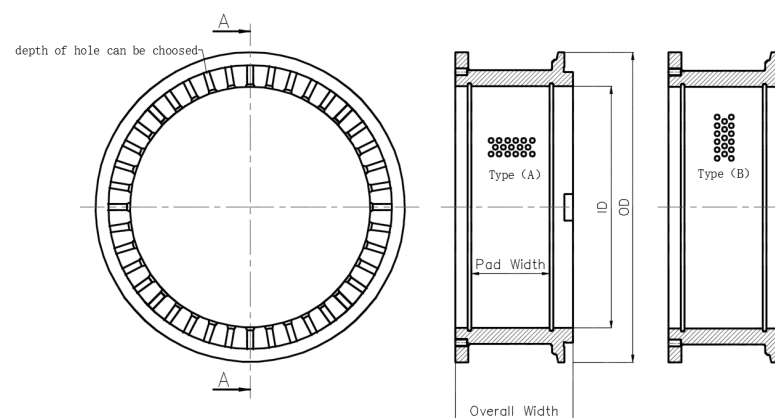
S/N	Model	Size	Hole Size
		(OD×ID×overall width×pad width-mm)	mm
43	IDAH530	680*530*258*172	Φ1-Φ20
44	IDAH530F	680*530*278*172	
45	IDAH635D	790*635*294*194	

Note: If user's data go beyond the above-mentioned scopes, they may be subject to an agreement between manufacturer and client.

LIYANG JIUHE MACHINERY INDUSTRIAL CO.,LTD



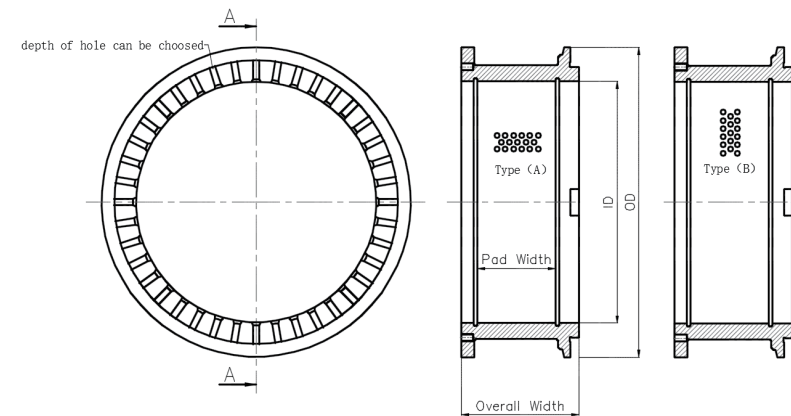
F / E&H Product Show



S/N	Model	Size (OD×ID×overall width×pad width-mm)	Hole Size mm
46	E&H320	400*320*160*108	Φ1-Φ20
47	E&H420M	500*420*182*138	
48	E&H450	610*450*205*134	

Note: If user's data go beyond the above-mentioned scopes, they may be subject to an agreement between manufacturer and client.

G / TPM Product Show

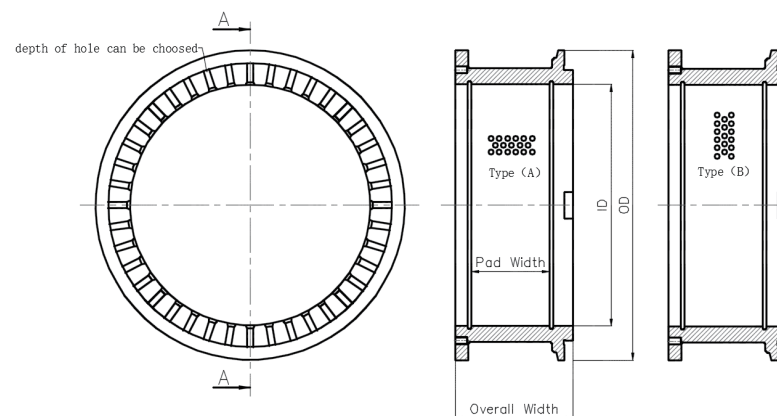
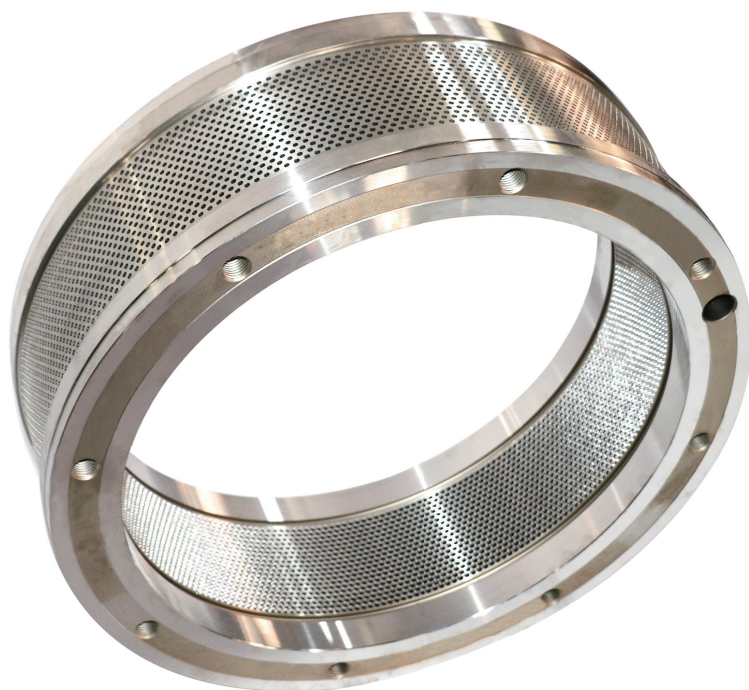


S/N	Model	Size	Hole Size
		(OD×ID×overall width×pad width-mm)	mm
49	TPM520	630*520*222*178	Φ1-Φ20

Note: If user's data go beyond the above-mentioned scopes, they may be subject to an agreement between manufacturer and client.



H / PTN Product Show



S/N	Model	Size (OD×ID×overall width×pad width-mm)	Hole Size mm
50	PTN450	560*452*180*106	Φ1-Φ20
51	PTN580	680*580*216*140	
52	PTN650	791*650*245*175	

Note: If user's data go beyond the above-mentioned scopes,they may be subject to an agreement between manufacturer and client.

Main Spare Parts

JIUHE one-stop to customer service in the business philosophy, the main accessories are also demands high-quality, all machines are equipped with CNC machining;

JIUHE high-quality series of pressure rollers of hobbing adoption of improved technology, moderate cogging depth, unique tooth design, materials conducive to greater frictional force prolong service life more than 50% of press roll.



Die

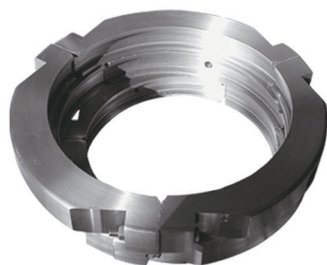


Roller shells



Quill shaft assembly





Clamp



Die cover



Main wheel



Safety pin



Main shaft



Coupling system



Roller shaft



Deflector



Hammer pin



Hammer



Gear shaft



Cutting knife

08 / Abnormal & Maintenance

1) Maintenance of ring die

1. The inner-surface of ring die should be checked after using for a period of time. If there's concave-convex, the part should be polished to ensure the service life of the ring die and roller.
2. occurs when your hold hoop loosening pellet mill, wear ring wear, bearing damage, as Abrasion as forcibly operate and so is not normal phenomenon, will lead to following circumstances (See chart).
3. Suckling pig feed ring die under specific operating environment, material type may appear uneven thickness (size materials) the case, such as your contact us encountered this issue can fully resolved occurrence of such phenomena.
4. Daily using of ring die should be noted, so that to calculate the accurate service life of ring die.
5. The original feed should be extruded out with non-corrosive oil, when the ring die was not used in a period of time. Otherwise, the feed in the hole will be drying harden by the heat of ring die, resulting in the following situations.
6. Ring die should be stocked in dry and clean place or the holes would be corroded and the service life of ring die would be reduced.
7. If granulators hold hoop loosening lapsed appears, the drive wheel or excessive wear ring abrasion, nip between overtighten, pelleting machine spindle bearing damage or serious empty shaft, excessive work overload, briquette iron, etc. May appear according entered a ring mold damage.

<i>model</i>	<i>Material Type</i>	<i>Feed Type</i>	<i>Holes Diameter of ring die</i>
1		High starch feed	Φ2-Φ6
2	Pellet of livestock and poultry	High energy feed	Φ2-Φ6
3	Pellet of aqua feed	High protein feed	Φ1.5-Φ3.5
4	Pellet of compound fertilizer	Feed include urea	Φ3-Φ6
5	Pellet of hops	High fibre feed	Φ5-Φ8
6	Pellet of chrysanthemum	High fibre feed	Φ5-Φ8
7	Pellet of peanut shell	High fibre feed	Φ5-Φ8
8	Pellet of cottonseed hull	High fibre feed	Φ5-Φ8
9	Pellet of turf	High fibre feed	Φ5-Φ8



2) The reason of unusual feed and the solution

There's some unusual feed appeared in the feed production of feed factory affecting the appearance and quality of the pellet, thus affecting the sales and reputation of the feed mill. The follow instruction list is the improving advice for unusual situation in the production of feed factory.

<i>model</i>	<i>shape features</i>	<i>Cauese</i>	<i>change method</i>
1	Curve of pellet, Haw on the surface	1. Cutter is far from ring die and blunt 2. powder is too thick 3. pellet is too hard	1. Moving cutter and changing blade 2. Improving fineness of grinding 3. Increasing efficient length of holes, adding molasses and oil
2	Level flaw appeared	1. Fibre is too long 2. Condition time is too short 3. Humidity is too high	1. Controlling fineness of fibre 2. Extending condition time 3. Controlling temperature of raw material, reducing moisture of condition
3	Vertical flaw appeared	1. Elasticity, means expand after compressing 2. High moisture, means flaw appeared after cooling 3. The standing time of feed in holes is too short	1. Improving formula, increasing feed density 2. Using steam for conditioning 3. Increasing efficient length of holes
4	Radioactive flaw appeared	Big material is not grinded as well(such as half or total com particle)	Controlling grinding fineness of material, increasing grinding uniformity
5	Concave-convex on the surface	1. Condition is not enough with big material 2. Steam with bubble, bubble flaw appeared after pelleting	1. Controlling grinding fineness of material, increasing grinding uniformity. 2. Improving the quality of steam
6	Bearded pellet	Too much steam and pressure, pellet cracked after out-putted from ring die, making bearded Pellet appeared	1. Reducing steam pressure, use low pressure steam (15-20psi) to condition 2. Pay attention to the accurate position of pressure reducing valv

09 / Agency Abroad

1



Agent in Vietnam
Company name: HOMING TRADING AND
IMPORT EXPORT JOINT STOCK COMPANY

2



Agent in Thailand
Company name: KTG MACHINERY &
TREAD COMPANY



JIUHE MACHINERY

3



Agent in Singapore
Company name: Resources At Work
Pte Ltd

4



Agent in Iran
Company name: Feed Iran
machinery(rahavard)Co